

The FN is a single stage end suction pump with radially split case and vortex recessed impeller. It is designed to handle fluids containing large solids without clogging (up to the full diameter of the discharge); fragile solids, such as crystals, carbon and even live shellfish; abrasives; as well as long fibrous materials. The ideal solution for low shear applications.

### APPLICATIONS

Fibrous - Textile, leather, rubber shreds, wood chips, straw & pulp, chicken feathers etc.

Viscous - Waste paper, pasty substances, juices and starch

Erosive - Sand, gravel, coal, grit

Fragile - Vegetables, fish, crystals

*Examples:*

Pulp & paper

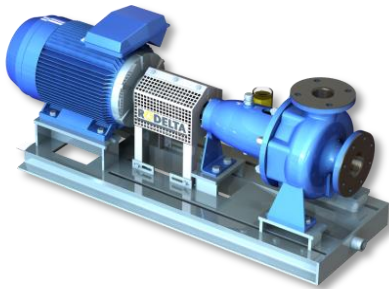
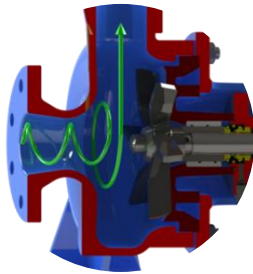
Sugar refining

Chemical & Petrochemical

Municipal

Rendering plants

Automotive



### FEATURES

Gentle pumping action <20% of pumped liquid in contact with the recessed impeller

Centre line discharge – self venting casing

Centre located impeller in circular casing resulting in low radial loads throughout the entire operating range

Low radial loads extend bearing and seal life.

Low attrition to solids

Minimum flows approx. 10% of flow at BEP

Available with rubber lining (coating)

**Construction** Horizontal Overhung  
Back pull out

**Design Standards** ATEX 94/9/EC

**Hydraulic** Recessed open impeller.

**Max Capacity** 800 m<sup>3</sup>/h

**Max Op. Pressure** 16 Bar\*

**Temperature** -20 Up to 140°C\*

**Max Head** 70 m

**Max Pump Speed** 2900 rpm

**Pipe Size** DIN 50-200 (2-8")

**Materials** Wide range of alloys  
incl NACE compliant

**Design Life** 20 Years (3 years  
constant operation)

\* For higher values contact us.

**RODELTA**  
PUMPS INTERNATIONAL



Oil & Gas

Paper & Pulp

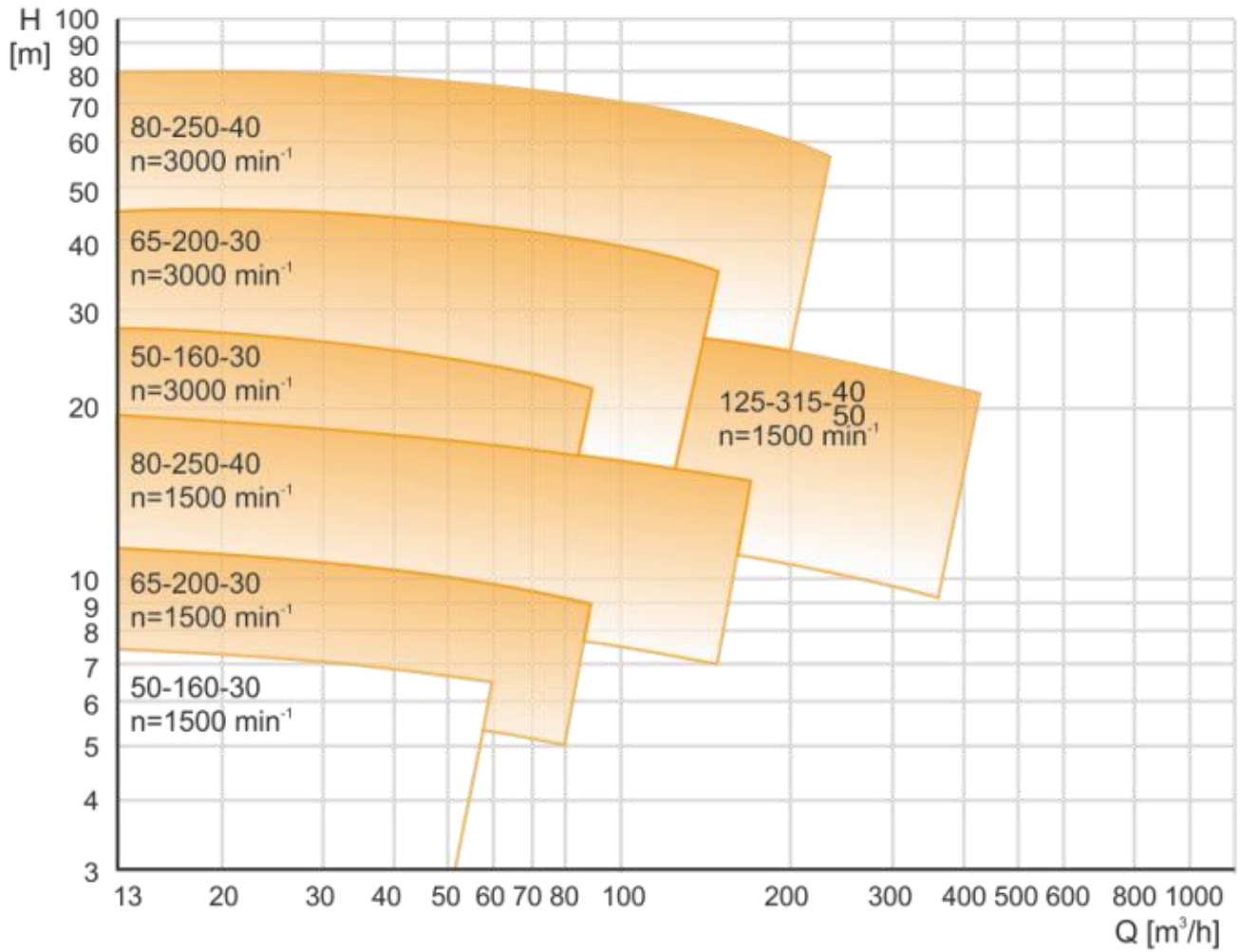
Petrochemical

Water Treatment

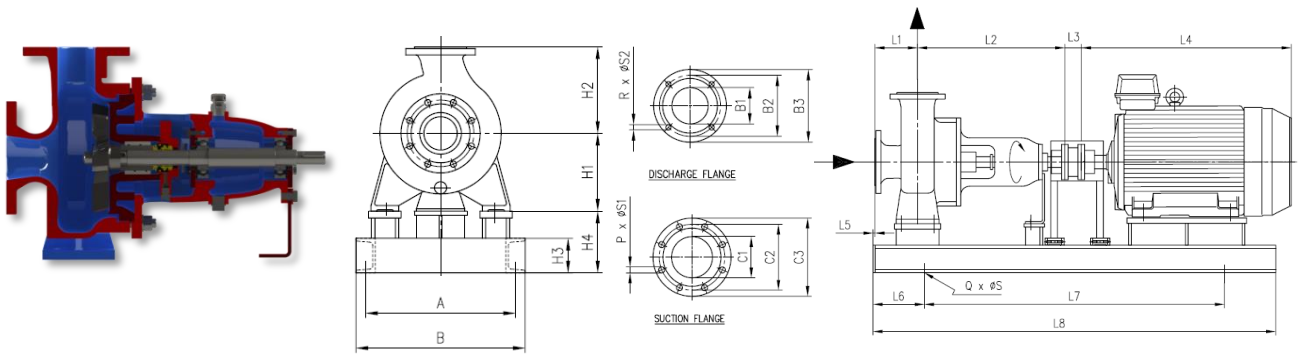
Drinking Water

Food & Beverage

### PERFORMANCE DATA



### DIMENSIONAL DATA



PUMP ITEM	PUMP TYPE	L1	L2	L3	L4	L5	L6	L7	L8	Q	∅S	A	B	H1	H2	H3	H4	C1	C2	C3	P	∅S1	B1	B2	B3	R	∅S2
P-4031 A	FN 50-160	100	420	5	615	10	150	800	1100	6	18	450	500	160	180	100	160	65	145	185	4	18	50	125	165	4	18
P-4031 B	FN 50-160	100	420	5	615	10	150	800	1100	6	18	450	500	160	180	100	160	65	145	185	4	18	50	125	165	4	18
P-4032 A	FN 50-160	100	420	5	615	10	150	800	1100	6	18	450	500	160	180	100	160	65	145	185	4	18	50	125	165	4	18
P-4032 B	FN 50-160	100	420	5	615	10	150	800	1100	6	18	450	500	160	180	100	160	65	145	185	4	18	50	125	165	4	18
P-4037 A	FN 50-160	100	420	5	615	10	150	800	1100	6	18	450	500	160	180	100	160	65	145	185	4	18	50	125	165	4	18
P-4037 B	FN 50-160	100	420	5	615	10	150	800	1100	6	18	450	500	160	180	100	160	65	145	185	4	18	50	125	165	4	18
P-4029	FN 65-200	125	430	5	780	10	150	1000	1300	6	18	500	550	180	200	100	180	80	160	200	8	18	65	145	185	4	18
P-4022 A	FN 80-250	140	555	5	940	10	150	1300	1600	6	18	700	750	200	225	100	210	100	180	220	8	18	80	160	200	4	18
P-4022 B	FN 80-250	140	555	5	940	10	150	1300	1600	6	18	700	750	200	225	100	210	100	180	220	8	18	80	160	200	4	18
P-4036	FN 125-315	165	616	5	1010	10	150	1450	1750	6	18	700	750	280	315	100	160	150	240	285	8	22	125	210	250	8	18