

Service

▶ Deciding whether to overhaul or replace a pump or compressor? With our experience we are able to evaluate your situation and offer impartial advice. We will discuss with you the best method of approach in order to reach a sustainable solution. Our team of skilled service technicians and engineers are to be found anywhere around the world.



▲ Rodelta Pumps International

Enschedesestraat 234
7552 CM Hengelo
POBox 650, 7550 AR Hengelo
The Netherlands

▲ Phone +31 (0) 74 2455200

Fax +31 (0) 74 2455201

Email: info@rodelta.com

www.rodelta.com

▲ Rodelta Pumps UK Ltd

Adur Business Centre, Little High Street
Shoreham by Sea, West Sussex
Bn43 5EG
United Kingdom

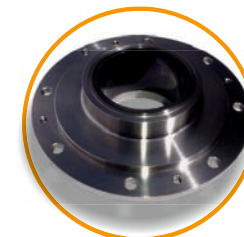
Phone +44 (0) 1273 782240

Skype: [rodeltauks](https://www.skype.com/user/rodeltauks)

email: salesuk@rodelta.com

RODELTA
PUMPS INTERNATIONAL

Spare Parts



The power of proven technology

RODELTA
PUMPS INTERNATIONAL



Rodelta Spare parts

▶ Rodelta Pumps International BV is a leading international producer of centrifugal pumps and positive displacement pumps to API610, API674 and API676 located in The Netherlands.

Rodelta's history hails back to 1946 when the firm was founded under the name of Pompenfabriek Delta N.V. In 1971 the company was acquired by Sulzer Pumps. From 1971 through 1997 we operated under the Sulzer Benelux name. In 1997 the company was taken over again with the name VDA Pumps. In 2007, the business was given its current name Rodelta Pumps International. The one thing that has not changed in all those years is our focus on the uncontested quality and durability of our pumps.

Due to the diverse history of name changes it is important to know where you can still find your original engineered manufactured (OEM) spare parts for your pumps.

Rodelta is able to provide OEM spare parts for (Delta, Sulzer, VDA pompen, and Rodelta)

Pump types:

AK	AZ	AZG
AZJ	BAO	CNH
CR	ES	ESM
EPS	ET	ETL
ETLS	FDNZ	FF
FFC	FFN	FFS
FN	HCN	HE
IB	IBC	LD
LH	LS	LSM
MA	MAH	MAV
MSCS	NDN	NDZ
NDZN	NK	NKE
NPS	NS	NSM
PMSH	R	SPP
SPV	TA	TAE
TAF	TAN	TAZ
TAZN	TAZAO	TC
TCE	TCF	TCN
TCE	VID	VS

You can still get OEM spare parts for your pump! No matter how old!

▶ Testimonial:

"Our old Delta pump from 1963 needed a new impeller. Rodelta was able to dig into their archives and find the old handwritten order and provide us with the spare parts that were specifically designed for our pump. If it wasn't for this knowledge we would have had to replace the whole pump." -

